

creating better places for the

GLENCOE PARK DISTRICT

Lakefront Park
Community
Open House

agenda

project background

master plan concepts

playground options

tennis/pickleball options

additional park features

feedback

questions



LAKE MICHIGAN

- LEGEND**
- (A) Periman Boating Beach
 - (B) Porter Bennett Boathouse
 - (C) Swimming Beach
 - (D) Adda and Paul Safran Beach House
 - (E) Tennis Courts (3)
 - (F) Playground
 - (G) Picnic Area with Grills
 - (H) Trail with Interpretive Signage

project background



project background



project background



project background



project background



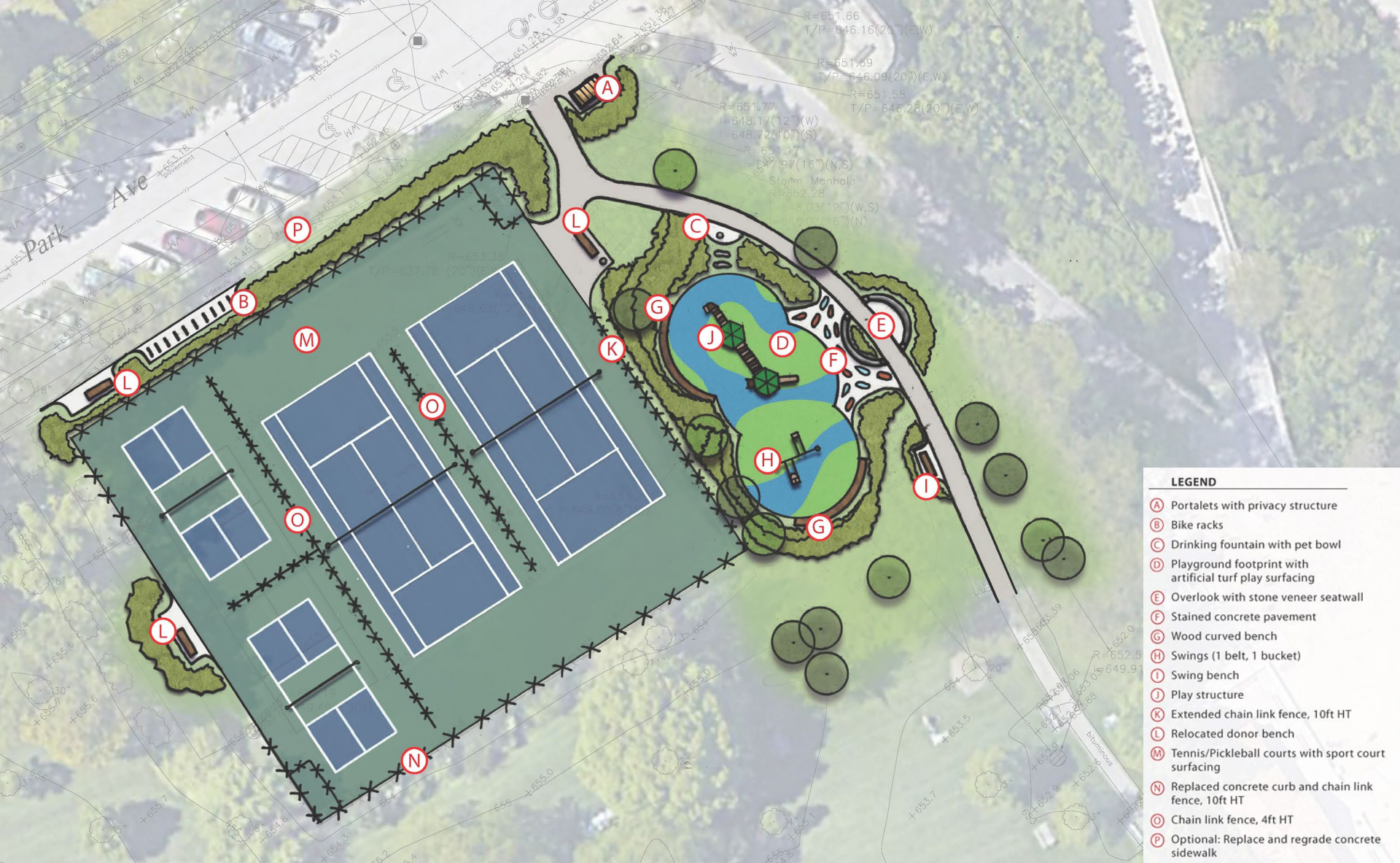
project background



project background



master plans



- LEGEND**
- (A) Portalets with privacy structure
 - (B) Bike racks
 - (C) Drinking fountain with pet bowl
 - (D) Playground footprint with artificial turf play surfacing
 - (E) Overlook with stone veneer seatwall
 - (F) Stained concrete pavement
 - (G) Wood curved bench
 - (H) Swings (1 belt, 1 bucket)
 - (I) Swing bench
 - (J) Play structure
 - (K) Extended chain link fence, 10ft HT
 - (L) Relocated donor bench
 - (M) Tennis/Pickleball courts with sport court surfacing
 - (N) Replaced concrete curb and chain link fence, 10ft HT
 - (O) Chain link fence, 4ft HT
 - (P) Optional: Replace and regrade concrete sidewalk

Concept A



portalet privacy enclosure



existing sidewalk



existing benches



drinking fountain with pet bowl



existing swing bench



tennis/pickleball courts

Concept A



artificial turf play surfacing



planting waves



wood curved bench



seatwall and specialty paving overlook



stained concrete pattern play



limestone steppers

Concept A



LEGEND

- (A) Portalets with privacy structure
- (B) Bike racks
- (C) Drinking fountain with pet bowl
- (D) Expanded playground footprint with artificial turf play surfacing
- (E) Plant tunnels
- (F) Stained concrete pavement
- (G) Artificial turf play mounds
- (H) Swings (1 belt, 1 bucket)
- (I) Stone Seating
- (J) Play structure
- (K) Extended chain link fence, 10ft HT
- (L) Wood curved bench
- (M) Tennis/Pickleball courts with sport court surfacing
- (N) Replaced concrete curb and chain link fence, 10ft HT
- (O) Chain link fence, 4ft HT
- (P) Optional: Replace and regrade concrete sidewalk
- (Q) Swing bench
- (R) Mushroom steppers
- (S) Relocated donor bench

Concept B



portalet privacy enclosure



existing sidewalk



existing benches



drinking fountain with pet bowl



existing swing bench



tennis/pickleball courts

Concept B



stained concrete pattern play and plant tunnel



telescopes



mushroom steppers



artificial turf play mounds



wood curved bench



play mounds and stone seating

Concept B



playground options



Concept A



LS
landscape
structures

Lakefront Park

GLC22LAK5-1-2 • 02.21.2022


Leisure Products

©2022 Landscape Structures. All Rights Reserved

Option 1



Lakefront Park

GLC22LAK5-1-1 • 02.21.2022



©2022 Landscape Structures. All Rights Reserved.

Option 1



Lakefront Park

GLC22LAK6-1-2 • 02.21.2022



©2022 Landscape Structures. All Rights Reserved.

Option 2



ls
landscape
structures

Lakefront Park

GLC22LAK6-1-3 • 02.21.2022


nJOYS
Leisure Products

©2022 Landscape Structures. All Rights Reserved.

Option 2



LEGEND

- (A) Portalets with privacy structure
- (B) Bike racks
- (C) Drinking fountain with pet bowl
- (D) Expanded playground footprint with artificial turf play surfacing
- (E) Plant tunnels
- (F) Stained concrete pavement
- (G) Artificial turf play mounds
- (H) Swings (1 belt, 1 bucket)
- (I) Stone Seating
- (J) Play structure
- (K) Extended chain link fence, 10ft HT
- (L) Wood curved bench
- (M) Tennis/Pickleball courts with sport court surfacing
- (N) Replaced concrete curb and chain link fence, 10ft HT
- (O) Chain link fence, 4ft HT
- (P) Optional: Replace and regrade concrete sidewalk
- (Q) Swing bench
- (R) Mushroom steppers
- (S) Relocated donor bench

Concept B



Lakefront Park

1162372-01-01-02 • 02.16.2022



©2022 Landscape Structures. All Rights Reserved.

Option 3



Lakefront Park

1162372-01-01-03 • 02.16.2022



©2022 Landscape Structures. All Rights Reserved.

Option 3



LS
landscape
structures

Lakefront Park

1162372-02-01-02 • 02.16.2022



©2022 Landscape Structures. All Rights Reserved.

Option 4



Lakefront Park

1162372-02-01-03 • 02.16.2022



©2022 Landscape Structures. All Rights Reserved.

Option 4



Lakefront Park

GLC22LAK3-1-2 • 02.16.2022



©2022 Landscape Structures. All Rights Reserved.

Option 5



LS
landscape
structures

Lakefront Park

GLC22LAK3-1-3 • 02.16.2022


nJOYS
Leisure Products

©2022 Landscape Structures. All Rights Reserved.

Option 5



LS
landscape
structures

Lakefront Park

GLC22LAK4-1-3 • 02.16.2022



©2022 Landscape Structures. All Rights Reserved.

Option 6



Lakefront Park

GLC22LAK4-1-2 • 02.16.2022



©2022 Landscape Structures. All Rights Reserved.

Option 6



court options



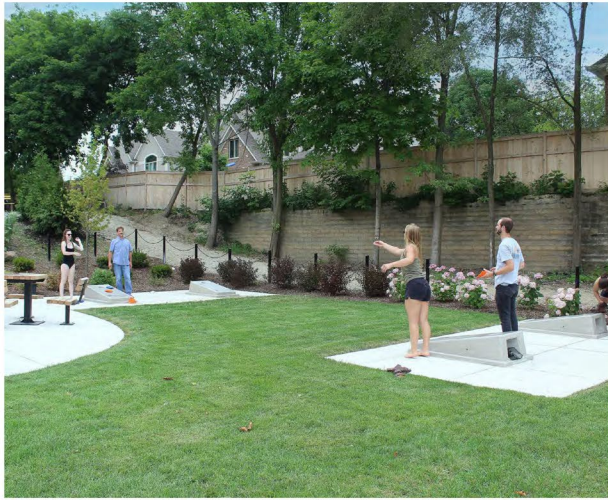
Option 1



Option 2



park features



baggo



bocce



fitness stations



walking loop



pollinator garden with interpretive signage



game tables

park features

Lakefront Park Master Plan

Glencoe Park District is considering applying for a grant to supplement the cost of future park improvements at Lakefront Park. If awarded the Park District intends to proceed with Concept B. If grant funding is not available or awarded, the Park District intends to adopt Concept A as the master plan vision for Lakefront Park. **Please provide your feedback on the concepts:**

Please rank the playground options:

1=most preferred, rank each column separately

Concept A:

_____ Option 1

_____ Option 2

Concept B:

_____ Option 3

_____ Option 4

_____ Option 5

_____ Option 6

Please circle your preferred tennis/ pickleball option:

Option 1:

2 tennis courts and 2 pickleball courts

Option 2:

1 tennis court and 4 pickleball courts

Please rank the following additional park features for Lakefront Park:

1=most preferred

_____ Baggo Courts

_____ Bocce Court

_____ Game Tables

_____ Walking Loop

_____ Fitness Stations

_____ Pollinator Garden

Other, please list:

feedback

We want to hear from you!



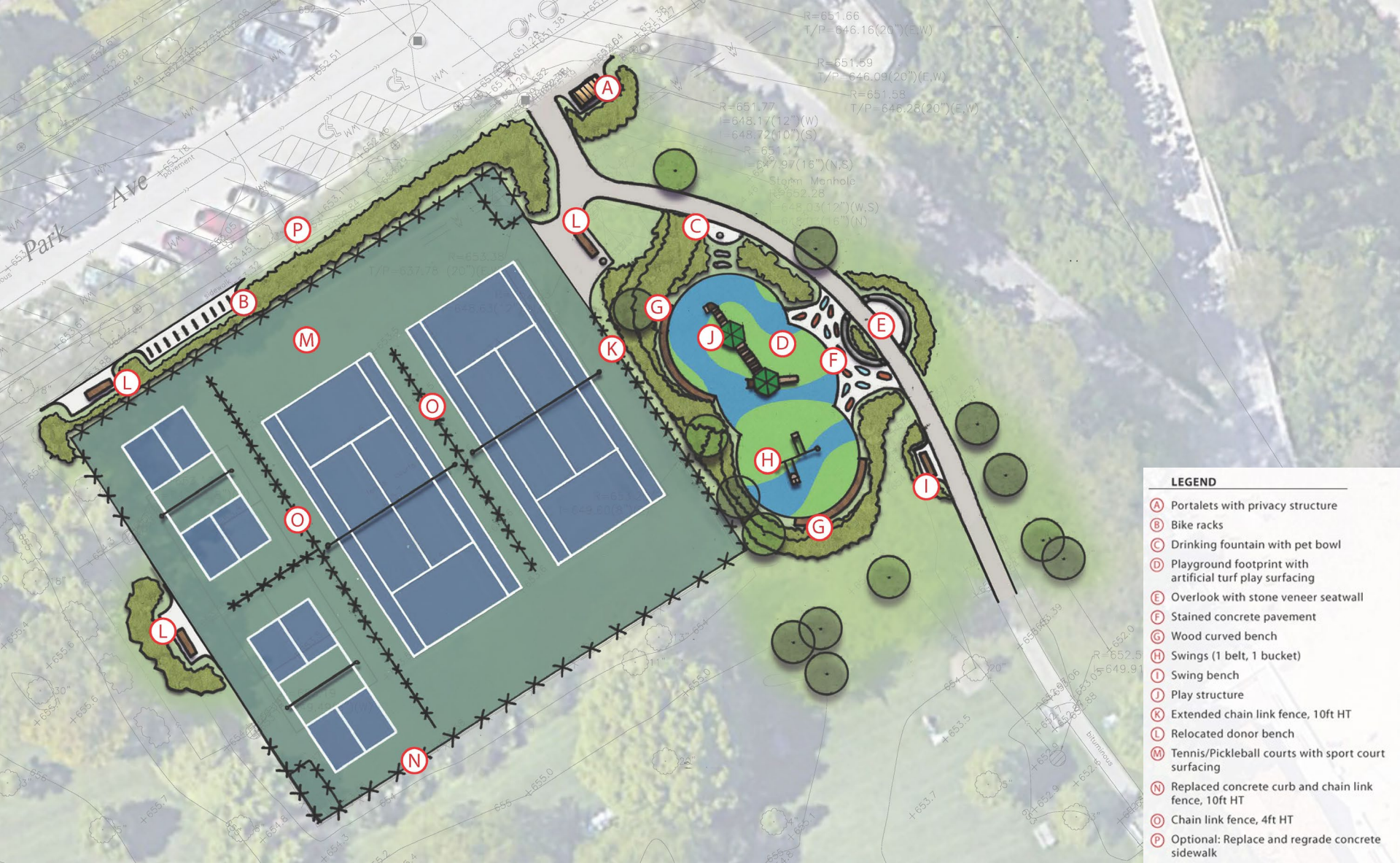
Lakefront Park Master Plan - Community Feedback Survey

<https://www.surveymonkey.com/r/lakefrontparkgpd>

feedback



questions



- LEGEND**
- (A) Portalets with privacy structure
 - (B) Bike racks
 - (C) Drinking fountain with pet bowl
 - (D) Playground footprint with artificial turf play surfacing
 - (E) Overlook with stone veneer seatwall
 - (F) Stained concrete pavement
 - (G) Wood curved bench
 - (H) Swings (1 belt, 1 bucket)
 - (I) Swing bench
 - (J) Play structure
 - (K) Extended chain link fence, 10ft HT
 - (L) Relocated donor bench
 - (M) Tennis/Pickleball courts with sport court surfacing
 - (N) Replaced concrete curb and chain link fence, 10ft HT
 - (O) Chain link fence, 4ft HT
 - (P) Optional: Replace and regrade concrete sidewalk

Concept A



LEGEND

- (A) Portalets with privacy structure
- (B) Bike racks
- (C) Drinking fountain with pet bowl
- (D) Expanded playground footprint with artificial turf play surfacing
- (E) Plant tunnels
- (F) Stained concrete pavement
- (G) Artificial turf play mounds
- (H) Swings (1 belt, 1 bucket)
- (I) Stone Seating
- (J) Play structure
- (K) Extended chain link fence, 10ft HT
- (L) Wood curved bench
- (M) Tennis/Pickleball courts with sport court surfacing
- (N) Replaced concrete curb and chain link fence, 10ft HT
- (O) Chain link fence, 4ft HT
- (P) Optional: Replace and regrade concrete sidewalk
- (Q) Swing bench
- (R) Mushroom steppers
- (S) Relocated donor bench

Concept B